



Rabbit anti CD156b (IN) Polyclonal Antibody

Alternative Name(s): ADAM8; CD156; MS2

Order Information

- **Description:** CD156b (IN)
- **Catalogue:** 600-870
- **Lot:** See label
- **Size:** 100ug/200ul
- **Host:** Rabbit
- **Clone:** nan
- **Application:** IHC(P), WB
- **Reactivity:** Hu, Ms

ANTIGEN PREPARATION

A synthetic peptide corresponding to the human CD156b at extracellular domain. This sequence is identical among human, mouse or rat origins.

BACKGROUND

CD156b is a type I transmembrane glycoprotein belong to the ADAM (a disintegrin and metalloprotease domain) family. This single-pass type-1 824 aa transmembrane glycoprotein contains a signal sequence, an extracellular domain (pro-domain, catalytic domain, disintegrin-cysteine-rich domain, glycosylation sites), transmembrane and cytoplasmic domain. CD156b is a multi-domain protein that includes a Zn-dependent protease domain in the extracellular portion. It releases the soluble forms of TNF and TGF α from cells. CD156b is identified by its ability to cleave the transmembrane form of TNF between Ala-76 and Val-77 to generate the soluble form. CD156b is therefore a prospective therapeutic target in human cancer. CD156b is expressed on T cells, neutrophils, endothelial cells, monocytes, dendritic cells, macrophages, polymorphonuclear leukocytes and myocytes. And non-lymphoid tissues including heart, placenta, brain, muscle.

PURIFICATION

The Rabbit IgG is purified by Epitope Affinity Purification

FORMULATION

This affinity purified antibody is supplied in sterile Phosphatebuffered saline (pH7.2) containing antibody stabilizer

SPECIFICITY

This antibody recognizes ~100 kDa of human CD156b. It also reacts with mouse and rat. The other species are not tested.

STORAGE

The antibodies are stable for 24 months from date of receipt when stored at -20oC to -70oC. The antibodies can be stored at 2oC-8oC for three month without detectable loss of activity. Avoid repeated freezing-thawing cycles.

APPLICATIONS/SUGGESTED WORKING DILUTIONS*

- Western Blot: 0.1-1 μ g/ml
- ELISA: 0.01-0.1 μ g/ml
- Immunoprecipitation: 2-5 μ g/ml
- IHC: 2-10 μ g/ml
- Flow cytometry: Not tested
- Molecular Weight: 100.0
- Positive Control: Kidney Tissue
- Cellular Location: Cell Membrane

FOR RESEARCH USE ONLY.

AbboMax, Inc 2528 Qume Drive, Suite 8, San Jose, California 95131, USA
1 408-573-1898 (Tel). 1 408-573-1858 (Fax). www.abbomax.com info@abbomax.com

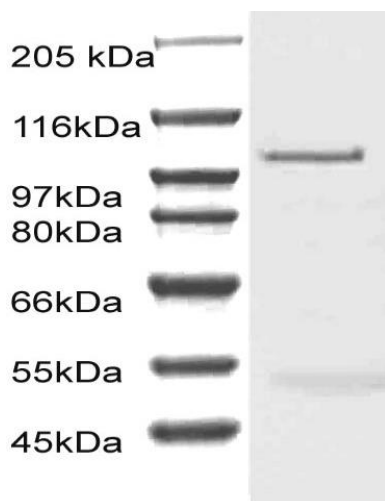


*Optimal dilutions should be determined by researchers for the specific applications.

FOR RESEARCH USE ONLY.

AbboMax, Inc 2528 Qume Drive, Suite 8, San Jose, California 95131, USA
1 408-573-1898 (Tel). 1 408-573-1858 (Fax). www.abbomax.com info@abbomax.com

DATA ATTACHMENTS



Western Blot: The cell lysate derived from Jurkat was immunoprobed by Rabbit anti-CD156b (Cat#600-870) at 1:500. An immunoreactive band is observed around ~100 kDa

REFERENCES

FOR RESEARCH USE ONLY.

AbboMax, Inc 2528 Qume Drive, Suite 8, San Jose, California 95131, USA
1 408-573-1898 (Tel). 1 408-573-1858 (Fax). www.abbomax.com info@abbomax.com